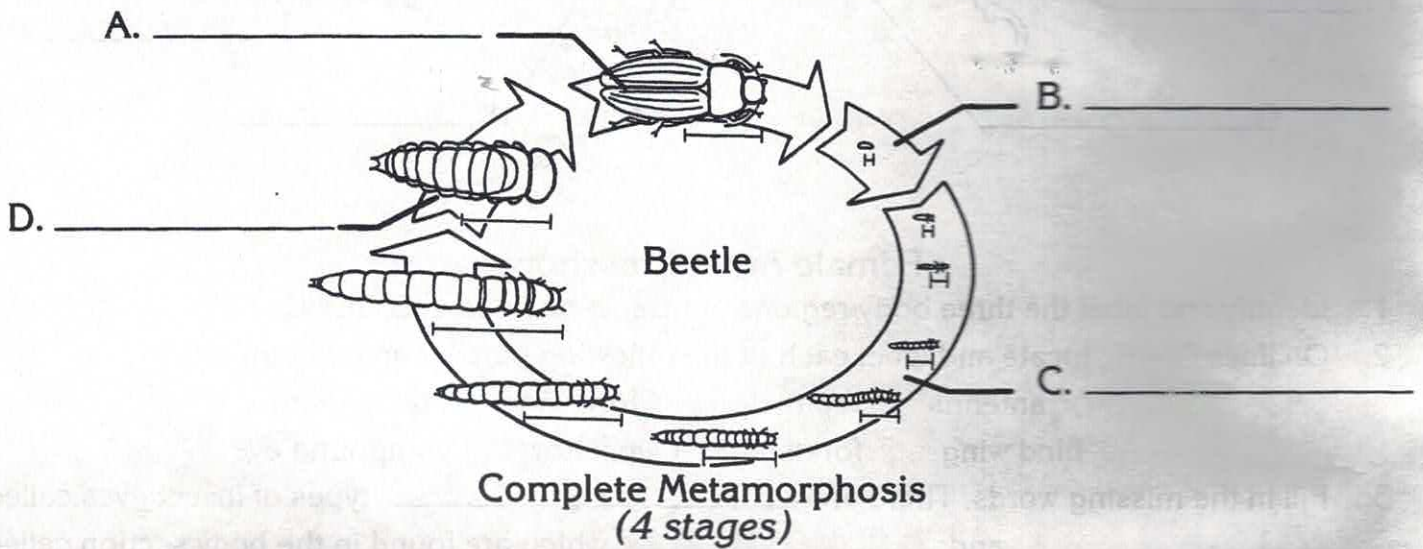
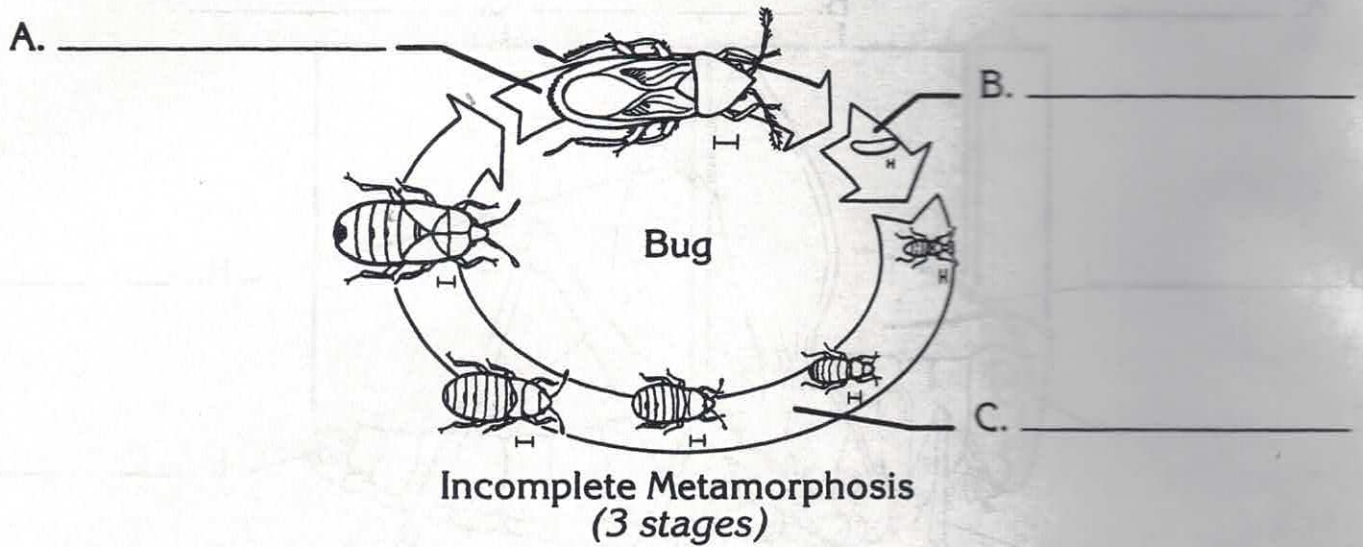


# Insect Development — Metamorphosis



1. On lines A — C and A — D, label the stages in each type of metamorphosis.
2. How do adult insects with incomplete metamorphosis differ from the nymph stage?  
\_\_\_\_\_
3. In complete metamorphosis, the \_\_\_\_\_ stage develops into an adult.
4. In incomplete metamorphosis, the juvenile insect is \_\_\_\_\_ in appearance to the adult.  

similar
not similar
5. In what stage is each of these organisms?
 

a. caterpillar _____	e. grubworm _____
b. mature grasshopper _____	f. mealworm _____
c. cocoon _____	g. young leafhopper _____
d. butterfly _____	h. mature cicada _____