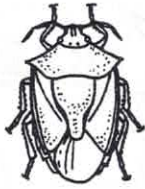


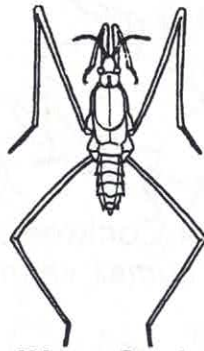
Order Hemiptera

True bug order



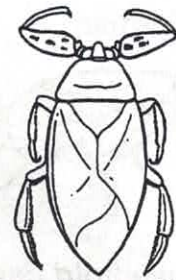
Stinkbug

has glands that produce a disagreeable odor; feeds on plants



Water Strider

Non-wetting hairs on legs allow insect to move on water surface to capture small insects.



Giant Water Bug

has large beak which can inflict a painful bite



Assassin Bug

predator of insects



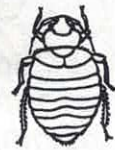
Ambush Bug

forelegs adapted for holding captured insects



Milkweed Bug

feeds on milkweed plants; not eaten by birds



Common Bedbug

wingless insect that feeds by sucking blood from man and animals

- List three characteristics of Hemiptera. _____

- Indicate if each insect listed below feeds on plants or animals. In the space provided write P if the insect feeds on plants and A if the insect feeds on animals.
 - _____ stinkbug
 - _____ water strider
 - _____ giant water bug
 - _____ common bedbug
 - _____ milkweed bug
 - _____ assassin bug
 - _____ ambush bug
- What special adaptations do these Hemiptera have?
 - water strider _____
 - stinkbug _____
 - ambush bug _____
- Which bug has bright colors which warn birds of its bad taste? _____
- Name the three stages in the life cycle of a Hemiptera. _____

- Which of these insects is also known as the wheel bug? _____