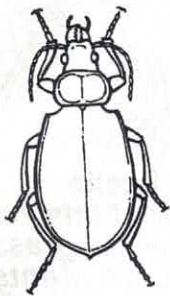


Order Coleoptera

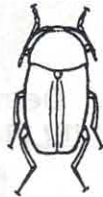
Beetle order



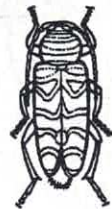
Ground Beetle
a predator of insects



Ladybird Beetle
(often called Ladybug)
Larvae and adults feed on aphids.



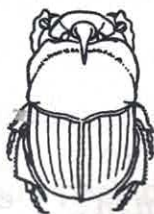
Carrion Beetle
scavenger, often feeding on decaying animals



Long-Horned Beetle
(locust borer)
Larva bores into wood. Some long-horned beetles cause serious damage to plants.



Boll Weevil
has snout and feeds on cotton plants



Dung Beetle
lays eggs in dung; Ball of dung with egg is rolled to spot and buried.



Click Beetle
has false eye-spots on thorax; able to flip over with a clicking sound



Firefly
has leathery wings and light-producing organ at end of abdomen

1. List three characteristics of the Coleoptera. _____

2. Which kind of beetle is often found feeding on decaying animals? _____
3. Which beetle is involved in each of these activities?
 _____ a. developing in a ball of dung _____ c. boring in wood
 _____ b. feeding on aphids _____ d. creating a glow
4. Write the letter C if the beetle is a carnivore. Write H if the beetle is an herbivore.
 a. _____ locust borer c. _____ ground beetle
 b. _____ boll weevil d. _____ ladybird beetle
5. Complete these statements. Female beetles lay eggs which hatch into _____
 This stage then becomes a _____ which transforms into an adult.
6. Describe how a click beetle might escape predators. _____
